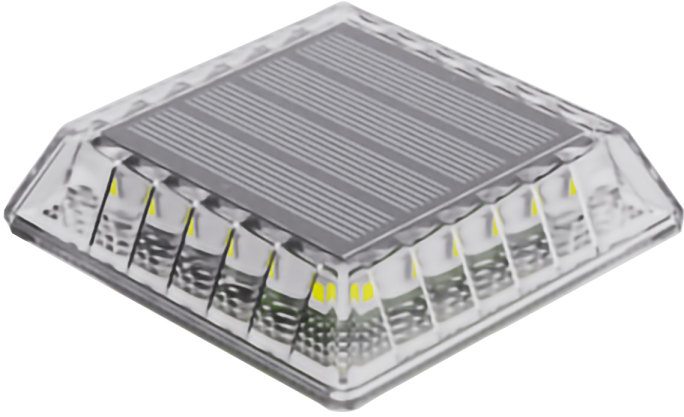


INSTRUCTION MANUAL



Application:

Outdoor courtyard, lawn, park, and other outdoor decoration lighting.

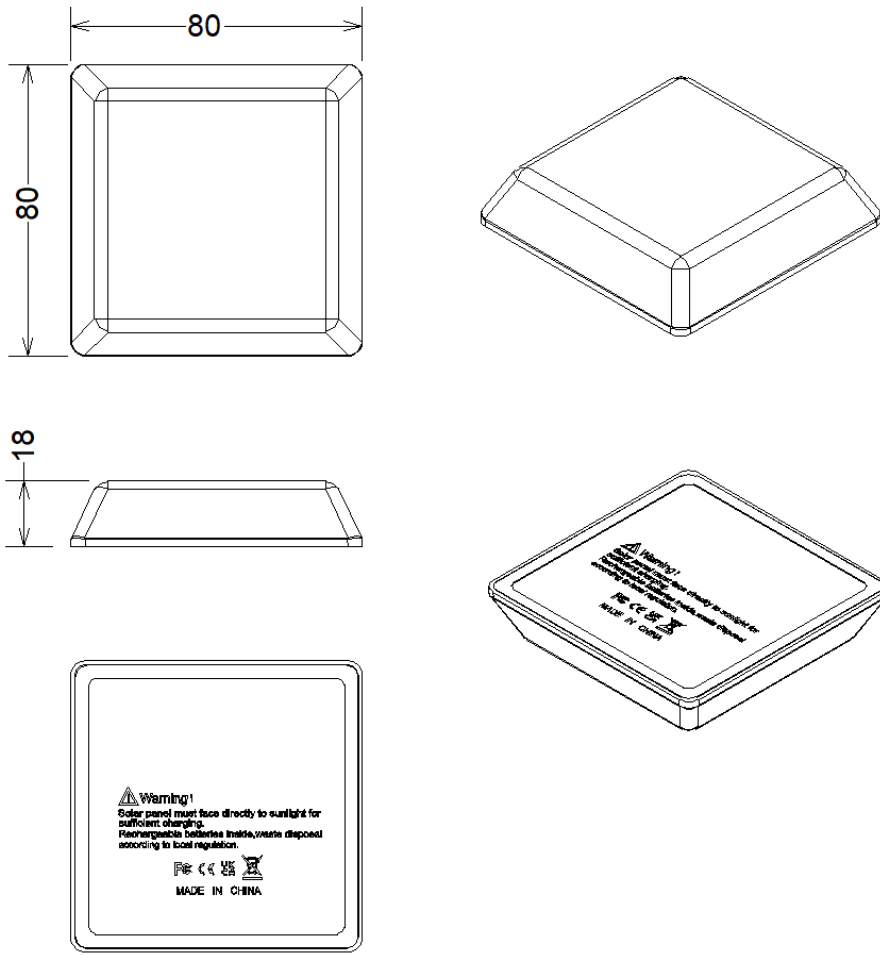
Direction for use:

1. Stick the 3M transparent glue on the back of the light, and then fix the light affixed with the 3M transparent glue in the desired position.
2. When first use, the battery may be out of power, just put it in direct sunlight for at least 4 hours.
3. During the day, the solar lamp is off, and at the same time the battery is automatically charged; The light will light when dark.

Technical Parameters:

Model	92133
Size	80*80*19mm
Voltage	DC1.2V
Power	0.03 W
LED Type	2835
LED Qty (pcs)	24
CCT	3000K/4000K/6000K+Blue
Luminous Flux	10 lm±5%
CRI	>80
Battery Type	AAA Battery
Battery Capacity	1.2V / 800mAh
Charging Mode	Solar charging
Charging Time	4-5 H
Working Time	>20H
Body Material	PC
Storage Environment	-25°C~+45°C

Product Dimension



Note:

1. Don't place the product in high temperature environment (above 60 degree) or put it into fire, otherwise it may cause explosion.
2. Stay away from other light sources, such as street lights, hallway lights, etc., that will automatically turn off the solar lights.
3. This solar light needs to be installed in a sunny place, so that the solar panel get enough sunlight. Please ensure that the place not be sheltered during 9:00am- 3:00pm.